

## INSPECTION

### 1. CHECK FLUID LEVEL

- (a) Keep the vehicle level.
- (b) With the engine stopped, check the fluid level in the oil reservoir.

If necessary, add fluid.

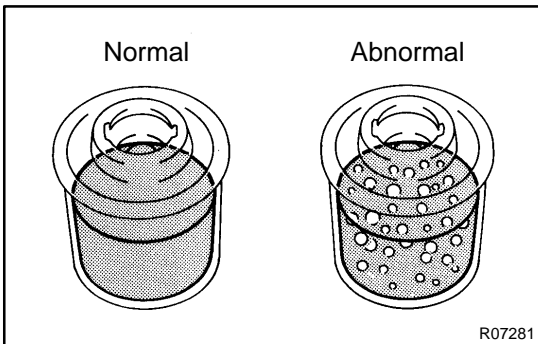
**Fluid: ATF DEXRON® II or III**

#### HINT:

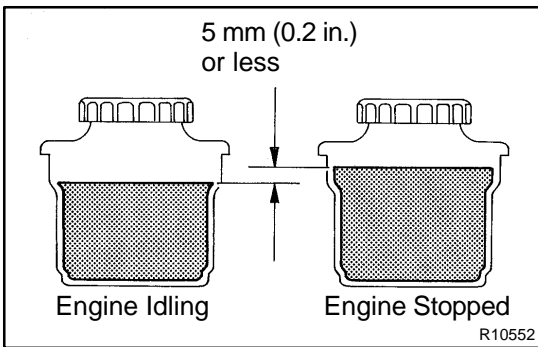
Check that the fluid level is within the HOT LEVEL range on the reservoir cap dipstick. If the fluid is cold, check that it is within the COLD LEVEL range.

- (c) Start the engine and run it at idle.
- (d) Turn the steering wheel from lock to lock several times to boost fluid temperature.

**Fluid temperature: 80°C (176°F)**



- (e) Check for foaming or emulsification. If there is foaming or emulsification, bleed power steering system (See page SR-4).



- (f) With the engine idling, measure the fluid level in the oil reservoir.
- (g) Stop the engine.
- (h) Wait a few minutes and remeasure the fluid level in the oil reservoir.

**Maximum fluid level rise: 5 mm (0.20 in.)**

If a problem is found, bleed power steering system (See page SR-4).

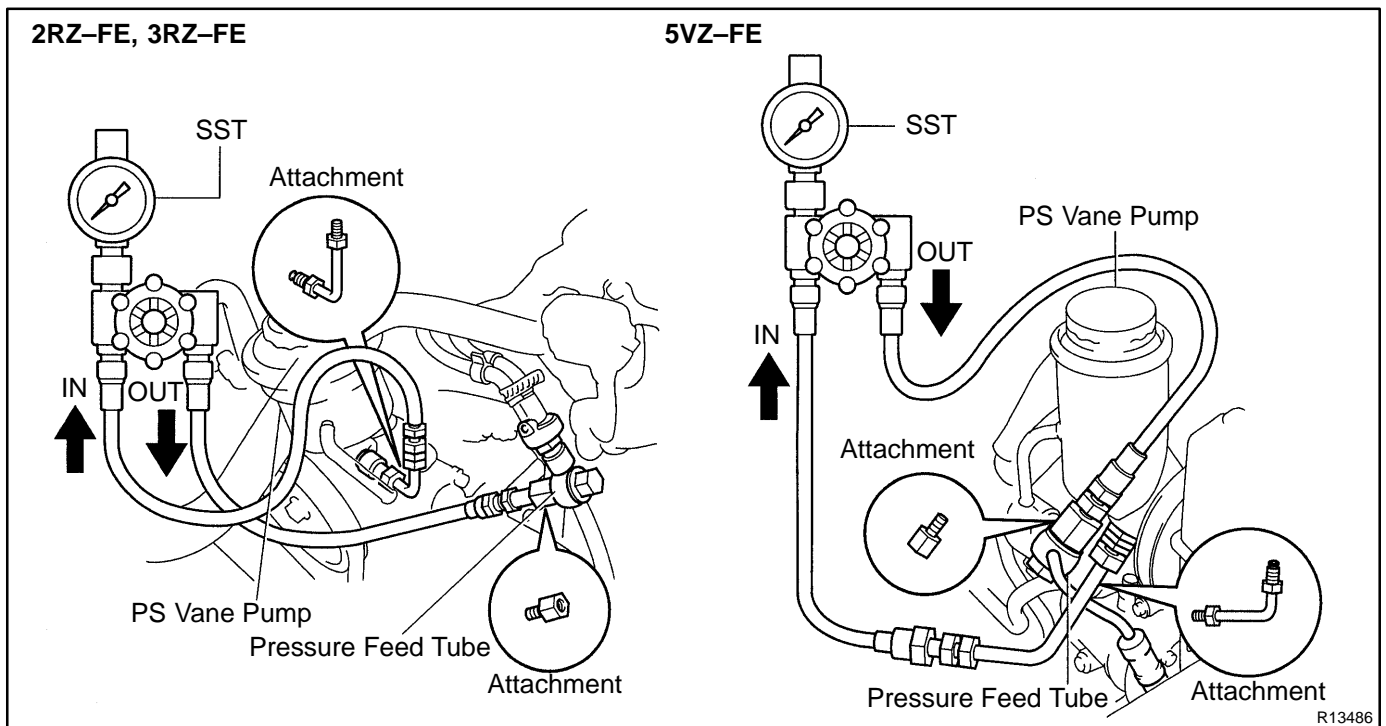
- (i) Check the fluid level.

**2. CHECK STEERING FLUID PRESSURE**

- (a) 5VZ-FE Engine:  
Loosen the 3 bolts and air cleaner assembly (See page [SR-43](#)).
- (b) Disconnect the pressure feed tube from the PS vane pump  
(2RZ-FE, 3RZ-FE Engines: See page [SR-34](#))  
(5VZ-FE Engine: See page [SR-45](#)).
- (c) Connect SST, as shown below.  
SST 09640-10010 (09641-01010, 09641-01030, 09641-01060)

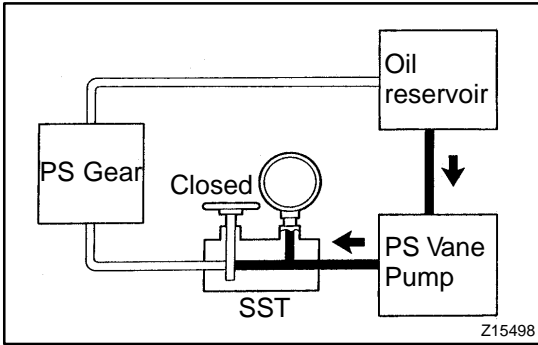
**NOTICE:**

**Check that the valve of the SST is in the open position.**



- (d) Bleed the power steering system (See page [SR-4](#)).
- (e) Start the engine and run it at idle.
- (f) Turn the steering wheel from lock to lock several times to boost fluid temperature.

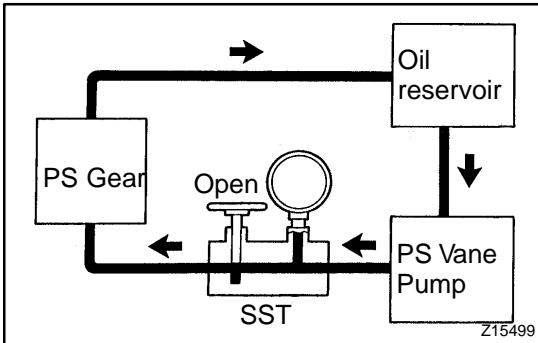
**Fluid temperature: 80 °C (176 °F)**



- (g) With the engine idling, close the valve of the SST and observe the reading on the SST.  
**Minimum fluid pressure:**  
**8,336 kPa (85 kgf/cm<sup>2</sup>, 1,209 psi)**

**NOTICE:**

- Do not keep the valve closed for more than 10 seconds.
- Do not let the fluid temperature become too high.

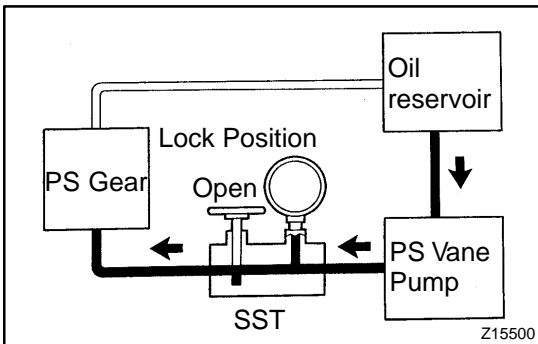


- (h) With the engine idling, open the valve fully.  
 (i) Measure the fluid pressure at engine speeds of 1,000 rpm and 3,000 rpm.

**Difference fluid pressure:**  
**490 kPa (5 kgf/cm<sup>2</sup>, 71 psi) or less**

**NOTICE:**

**Do not turn the steering wheel.**



- (j) With the engine idling and valve fully opened, turn the steering wheel to full lock.

**Minimum fluid pressure:**  
**8,336 kPa (85 kgf/cm<sup>2</sup>, 1,209 psi)**

**NOTICE:**

- Do not maintain lock position for more than 10 seconds.
- Do not let the fluid temperature become too high.

- (k) Disconnect the SST.  
 (l) Connect the pressure feed tube  
 (2RZ-FE, 3RZ-FE Engines: See page [SR-42](#))  
 (5VZ-FE Engine: See page [SR-53](#)).  
 (m) 5VZ-FE Engine:  
 Install the air cleaner and 3 bolts (See page [SR-43](#)).  
 (n) Bleed the power steering system (See page [SR-4](#)).