

## CLUTCH PEDAL INSPECTION

CL01P-01

### 1. CHECK THAT PEDAL HEIGHT IS CORRECT

**Pedal height from floor panel:**

**170.0–180.0 mm (6.692–7.086 in.)**

**Pedal height from asphalt sheet:**

**167.0–177.0 mm (6.574–6.968 in.)**

### 2. IF NECESSARY, ADJUST PEDAL HEIGHT

Loosen the lock nut and turn the stopper bolt until the height is correct. Tighten the lock nut.

### 3. CHECK THAT PEDAL FREE PLAY AND PUSH ROD PLAY ARE CORRECT

(a) Depress the pedal until the clutch resistance begins to be felt.

**Pedal free play: 5.0 – 15.0 mm (0.197 – 0.591 in.)**

(b) Gently depress the pedal until the resistance begins to increase a little.

**Push rod play at pedal top:**

**1.0–5.0 mm (0.039–0.197 in.)**

### 4. IF NECESSARY, ADJUST PEDAL FREEPLAY AND PUSH ROD PLAY

(a) Loosen the lock nut and turn the push rod until the freeplay and push rod play are correct.

(b) Tighten the lock nut.

(c) After adjusting the pedal freeplay, check the pedal height.

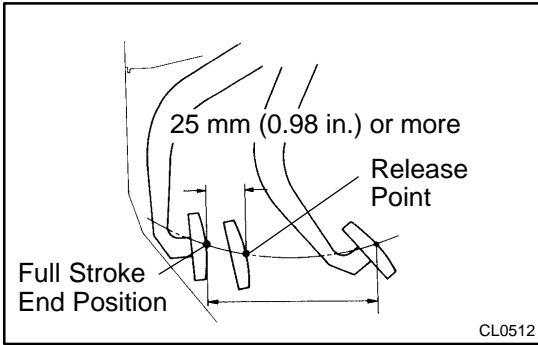
(d) Connect the air duct and install the lower finish panel.

### 5. CHECK CLUTCH RELEASE POINT

(a) Pull the parking brake lever and install wheel stopper.

(b) Start the engine and idle the engine.

(c) Without depressing the clutch pedal, slowly shift the shift lever into reverse position until the gears contact.

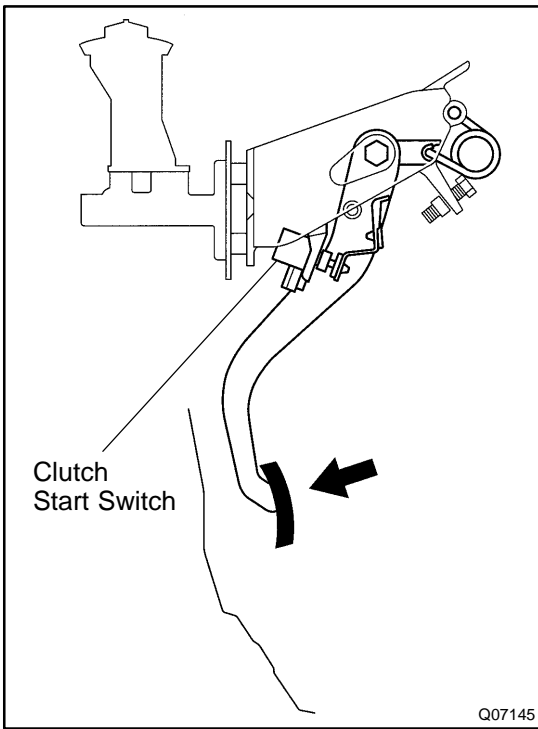


(d) Gradually depress the clutch pedal and measure the stroke distance from the point that the gear noise stops (release point) up to the full stroke end position.

**Standard distance: 25 mm (0.98 in.) or more (From pedal stroke end position to release point)**

If the distance is not as specified, perform the following operation.

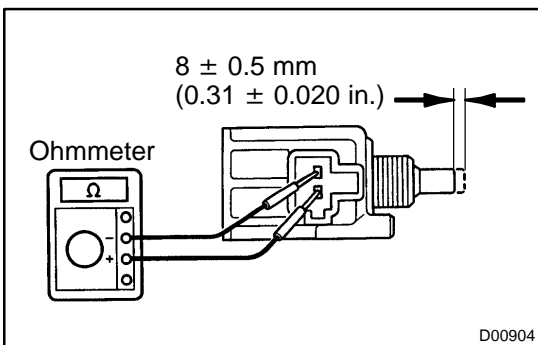
- Check pedal height.
- Check push rod play and pedal freeplay.
- Bleed the clutch line.
- Check the clutch cover and disc.



**6. CHECK CLUTCH START SYSTEM**

- (a) Check that the engine does not start when the clutch pedal is released.
- (b) Check that the engine starts when the clutch pedal is fully depressed.

If necessary, replace the clutch start switch.

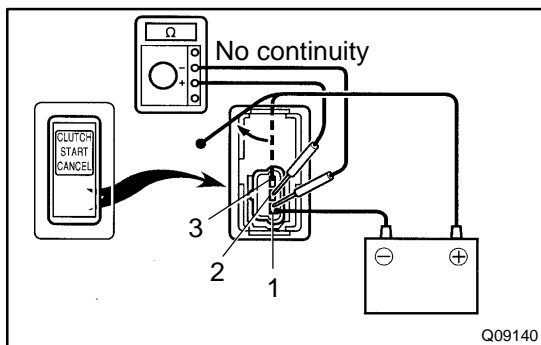
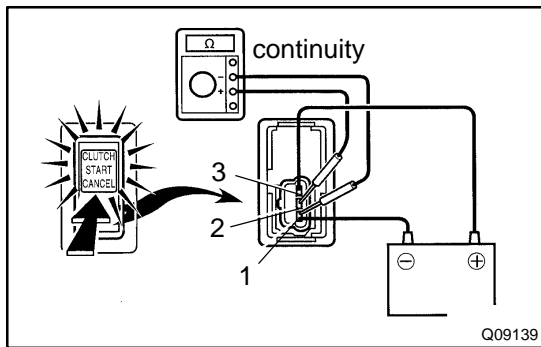
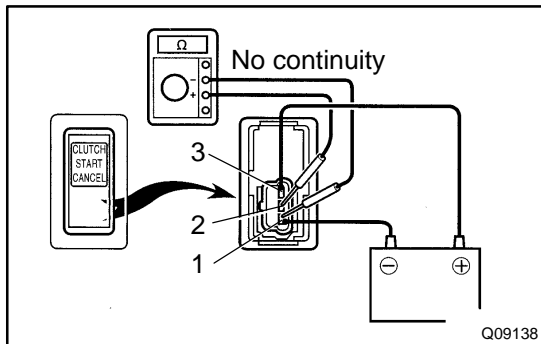
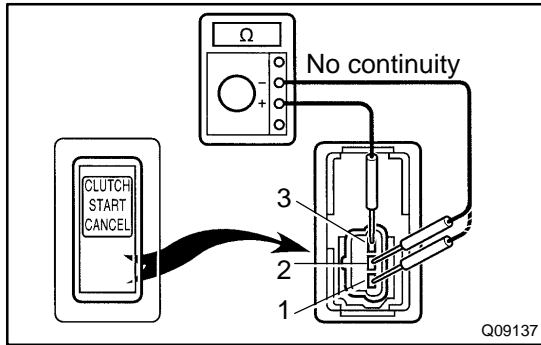
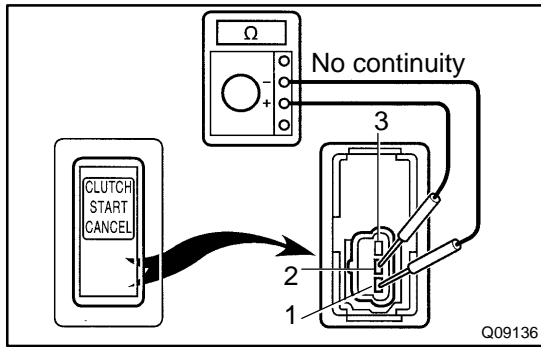


**7. CHECK CONTINUITY OF CLUTCH START SWITCH**

Check the continuity between terminals when the switch is ON and OFF.

Switch position	Condition
ON (pushed)	Continuity
OFF (free)	No Continuity

If continuity is not as specified, replace the switch.



**8. CHECK CONTINUITY OF CLUTCH START CANCEL SWITCH**

(a) Check that there is no continuity when connecting the positive (+) lead from the ohmmeter to terminal 2 and the negative (-) lead to terminal 1.

(b) Check that there is no continuity when connecting the positive (+) lead from the ohmmeter to terminal 3 and the negative (-) lead to terminal 1.

(c) Check that there is no continuity between terminals 2 and 3.

If the continuity is not as specified, replace the clutch start cancel switch.

**9. CHECK OPERATION OF CLUTCH START CANCEL SWITCH**

(a) Connect positive (+) lead from the battery to terminal 3 and connect negative (-) lead to terminal 1.

(b) Check that there is no continuity when connecting the positive (+) lead from the ohmmeter to terminal 2 and the negative (-) lead to terminal 1.

(c) When pushing the switch and check that the indicator light comes on and there is continuity between terminal 1 and 2.

(d) Check that there is no continuity between terminals 1 and 2 when disconnecting the battery lead.

If continuity is not as specified, replace the clutch start cancel switch.