

DTC	P0136	Oxygen Sensor Circuit Malfunction (Bank 1 Sensor 2)
------------	--------------	--

CIRCUIT DESCRIPTION

Refer to DTC P0125 on page [DI-42](#) .

DTC No.	DTC Detection Condition	Trouble Area
P0136	Voltage output of heated oxygen sensor remains at 0.45 V or less 0.60V or more when vehicle is driven at 50 km/h (31 mph) or more after engine is warmed up (2 trip detection logic)	<ul style="list-style-type: none"> • Open or short in heated oxygen sensor circuit • Heated oxygen sensor

HINT:

Sensor 2 refers to the sensor farther away from the engine body.

WIRING DIAGRAM

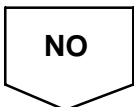
Refer to DTC P0125 on page [DI-42](#) .

INSPECTION PROCEDURE

HINT:

Read freeze frame data using TOYOTA hand-held tester or OBD II scan tool, as freeze frame data records the engine conditions when a malfunction is detected. When troubleshooting, it is useful for determining whether the vehicle was running or stopped, the engine was warmed up or not, the air-fuel ratio was lean or rich, etc. at the time of the malfunction.

1	Are there any other codes (besides DTC P0136) being output?
----------	--



2	Check for open and short in harness and connector between ECM and heated oxygen sensor (See page IN-28).
----------	--



3	Check output voltage of heated oxygen sensor.
----------	--

PREPARATION:

- (a) Connect the OBD II scan tool or TOYOTA hand-held tester to the DLC3.
- (b) Warm up the engine to normal operating temperature.

CHECK:

Read the voltage output of the heated oxygen sensor when the engine is suddenly raced.

HINT:

Perform quick racing to 4,000 rpm 3 times using the accelerator pedal.

OK:

Heated oxygen sensor output voltage:

Alternates from 0.45 V or less to 0.60 V or more.

OK

Check that each connector is properly connected.

NG

Replace heated oxygen sensor.